

# Prenatal Evaluation of the Fetus with Atrioventricular Canal Defect

Children's Mercy Fetal Cardiology Education Series

Hayley S. Graue Hancock, MD, FAAP

Pediatric and Fetal Cardiology

Medical Director, Cardiac High Acuity Monitoring Program

Ward Family Heart Center

Assistant Professor



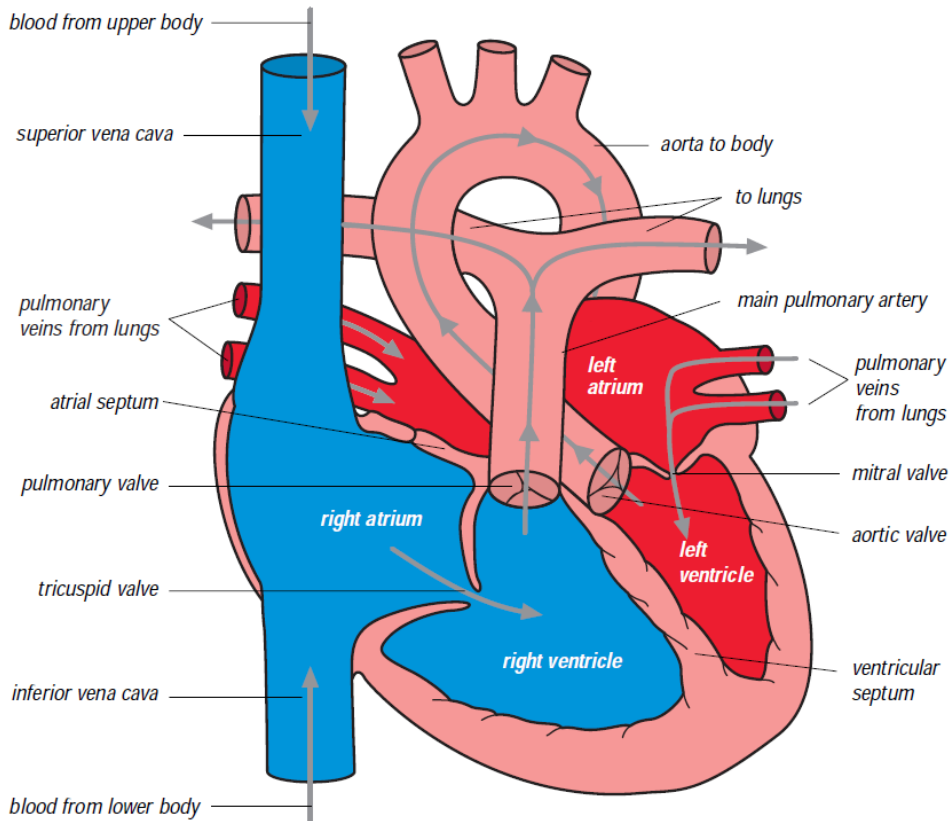
# Disclosures


- No disclosures

# Objectives

- Understand the basic anatomy and embryologic basis of atrioventricular canal/septal defects (AVSDs)
- Define fetal imaging goals for AVSDs
- Recognize aspects of AVSD anatomy on shared AVSD fetal imaging cases

# Normal Heart



 ©1997 Pritchett & Hull Associates, Inc. Atlanta, GA 800-241-4925 Providing Quality Health Education Materials Since 1973

# Atrioventricular Septal Defect

- AKA AV canal defect, endocardial cushion defect
- 40-45% with trisomy 21/Down syndrome have CHD: ~40% of these have AVSD
- Heterotaxy
- Embryologically: failure of the endocardial cushions to fuse creating a defect in the AV septum
- Fetal diagnosis feasible and allows for counseling and identification of noncardiac defects (trisomy 21)

# Atrioventricular Septal Defect

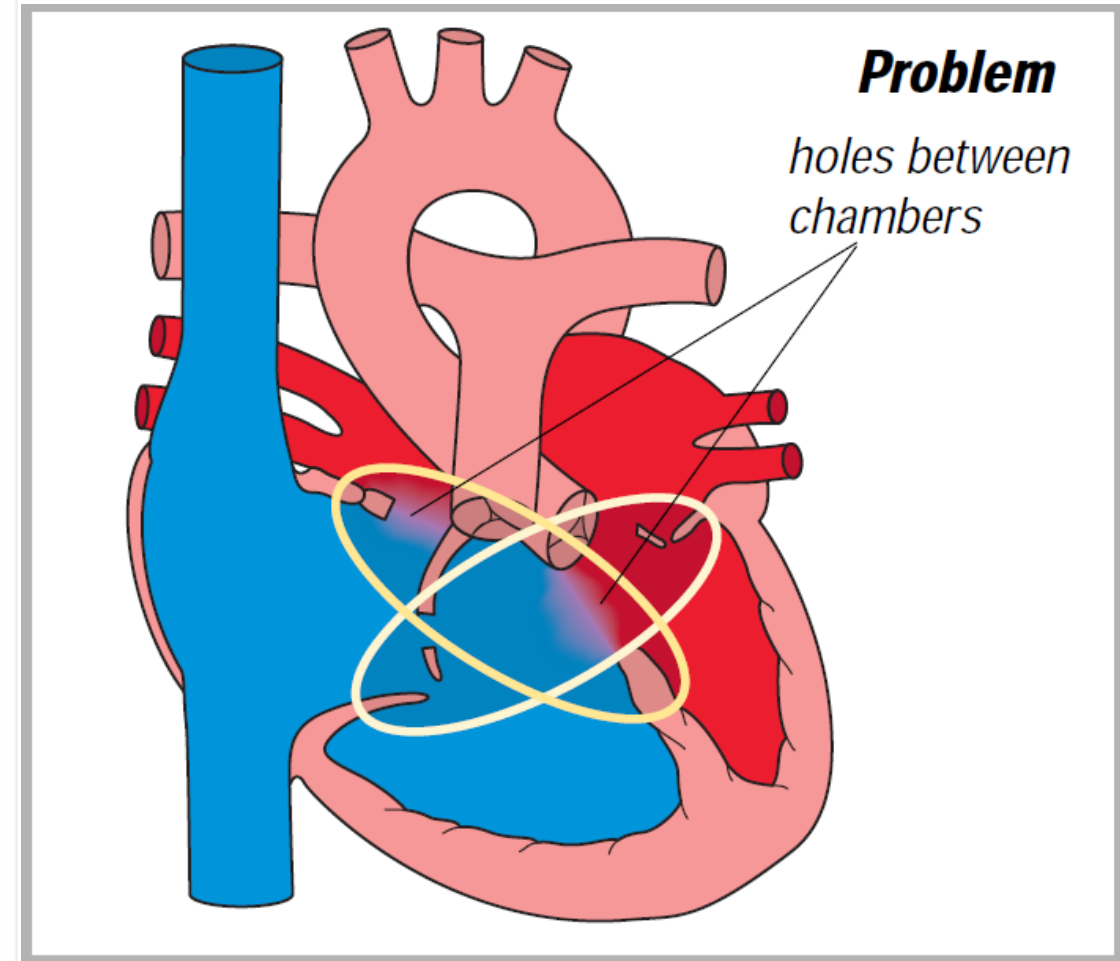
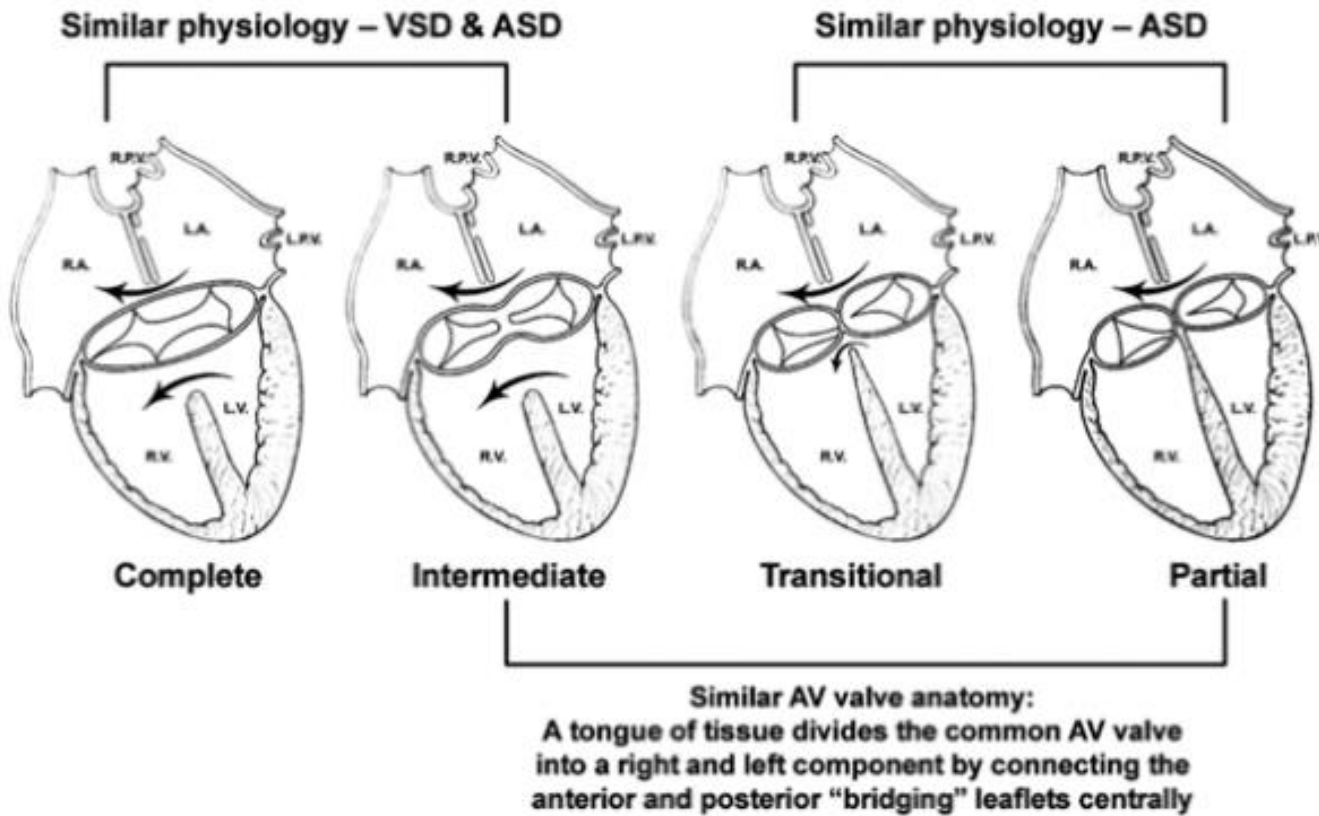
- Absence of the atrioventricular (AV) portion of the septum
  - Exclusive atrial communication
  - Combined atrial septal defect and ventricular septal defect
  - Exclusive ventricular communication
- Maldevelopment of AV valves resulting in common inlet to both ventricles
- Common AV valve is abnormal, and incompetence (regurgitation) frequently occurs

# Atrioventricular Septal Defect

- Complete versus partial AVSD
- Balanced versus unbalanced (i.e. ventricular dominance, single ventricle)
- Complete form:
  - Primum atrial septal defect
  - Inlet ventricular septal defect
  - Single common AV valve annulus/common AV valve junction
- Partial form: primum ASD and cleft mitral valve

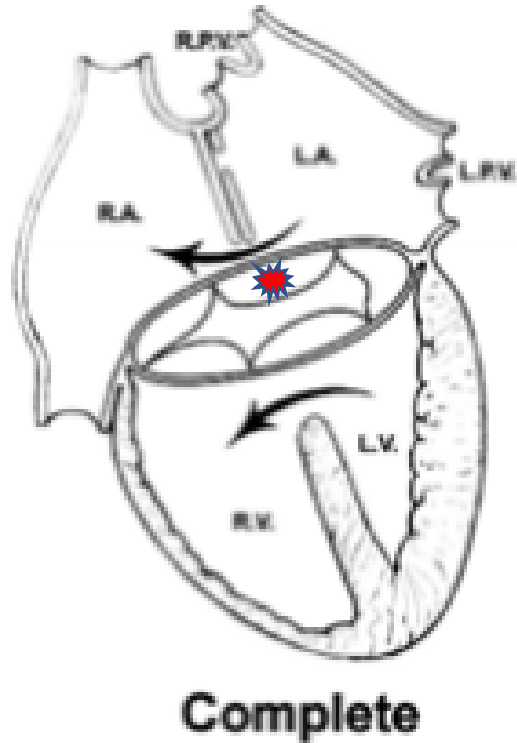
# Anatomy

## AVSD Summary



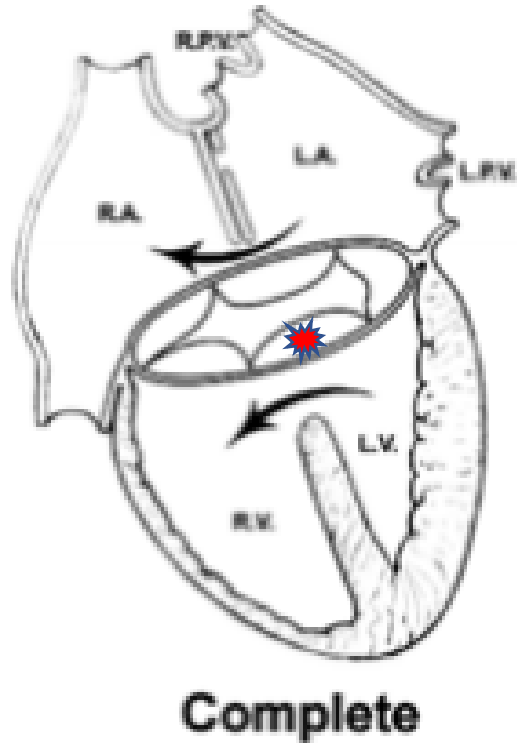


# Common AV Valve Anatomy



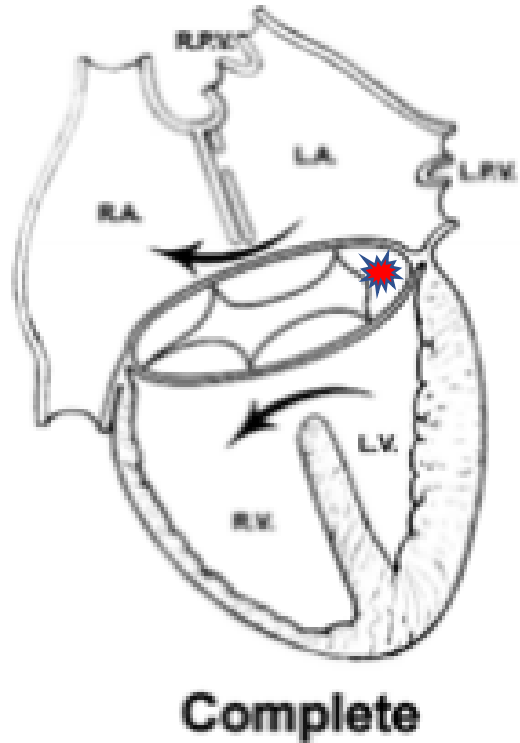
- Superior bridging leaflet

# Common AV Valve Anatomy



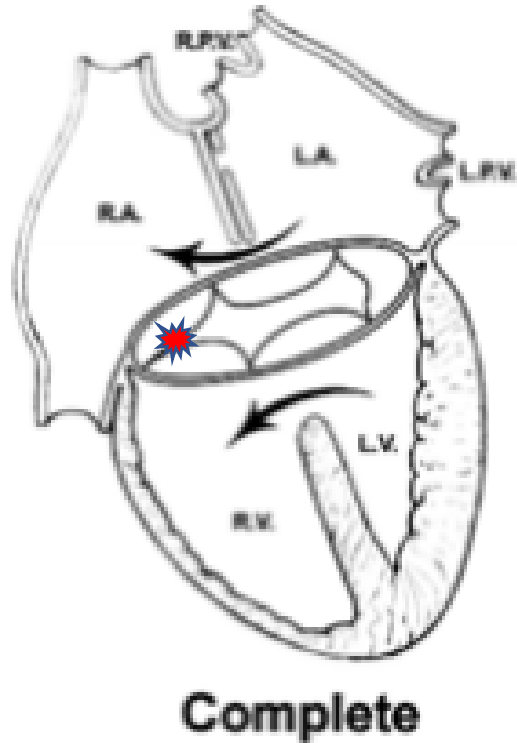
- Inferior bridging leaflet

# Common AV Valve Anatomy



- Left mural leaflet

# Common AV Valve Anatomy



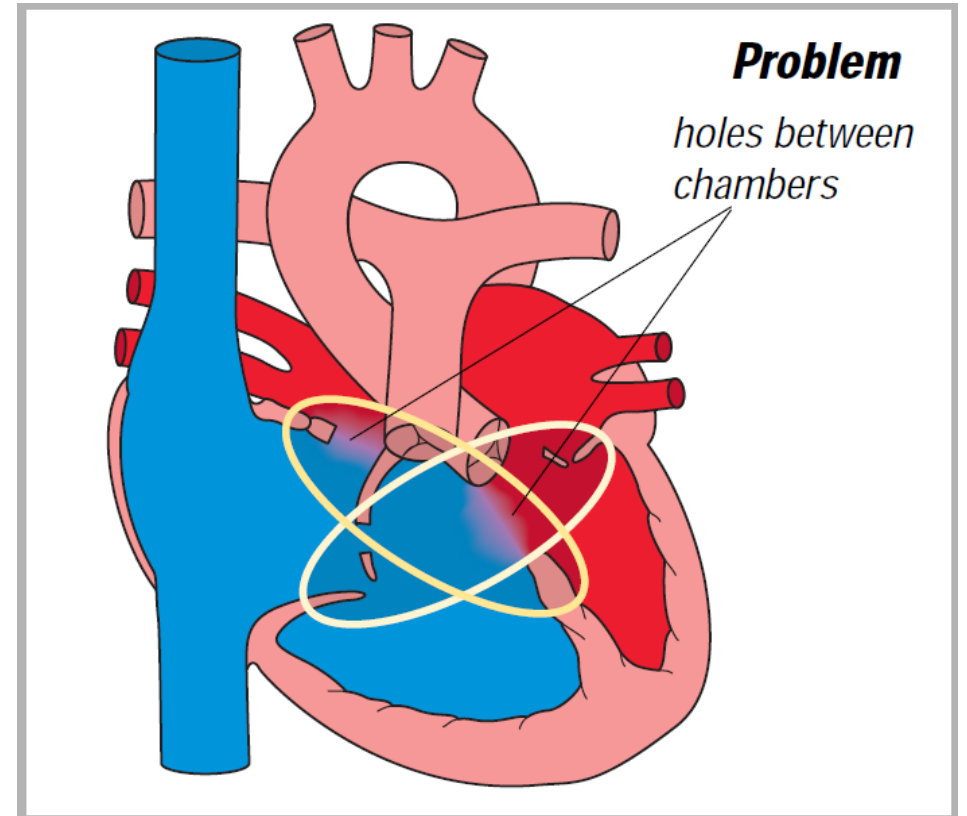
- Right anterior and posterior leaflets

# Common AV Valve Anatomy

- Rastelli Classification (superior bridging leaflet)
  - Type A: superior bridging leaflet divided at ventricular septum and attaches to septum
  - Type B: rare, attaches to superior RV papillary muscle
  - Type C: free floating, no attachments to septum

# Fetal Physiology

- Little impact on fetal circulation unless significant common AV valve regurgitation
- Pulmonary vascular resistance in utero is elevated
  - Little left to right shunting  
→ no significant volume load
- Complete heart block



# Associated Lesions

- Patent ductus arteriosus
- Secundum atrial septal defect
- Coarctation of the aorta
- Additional VSDs
- Tetralogy of Fallot (almost exclusively seen in patients with trisomy 21)

# AVSD Fetal Echo Features

## Key Echocardiographic Features

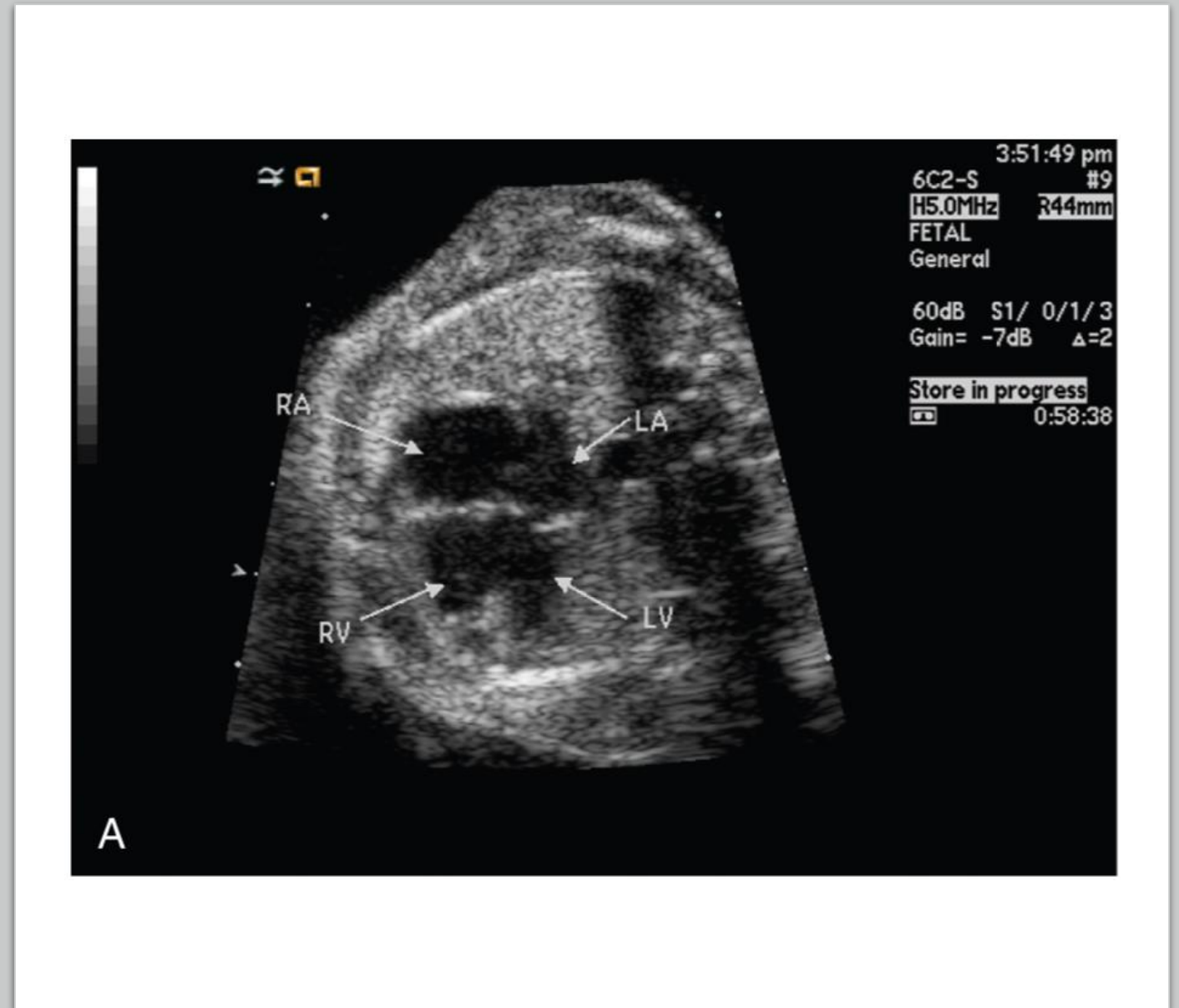
---

- Size of the atrial septal defect
- Size of the ventricular septal defect (large = complete, small = transitional, none = incomplete)
- Valve attachments to the crest of the septum
- Presence or absence and degree of atrioventricular valve regurgitation
- Degree of balance or unbalance of the atrioventricular valve over the two ventricles
- Relative size of the ventricular cavities
- Presence or absence of left ventricular outflow tract obstruction (valve tissue obstructing or narrowed pathway due to small left ventricular outflow tract)



# AVSD Fetal Echo Features

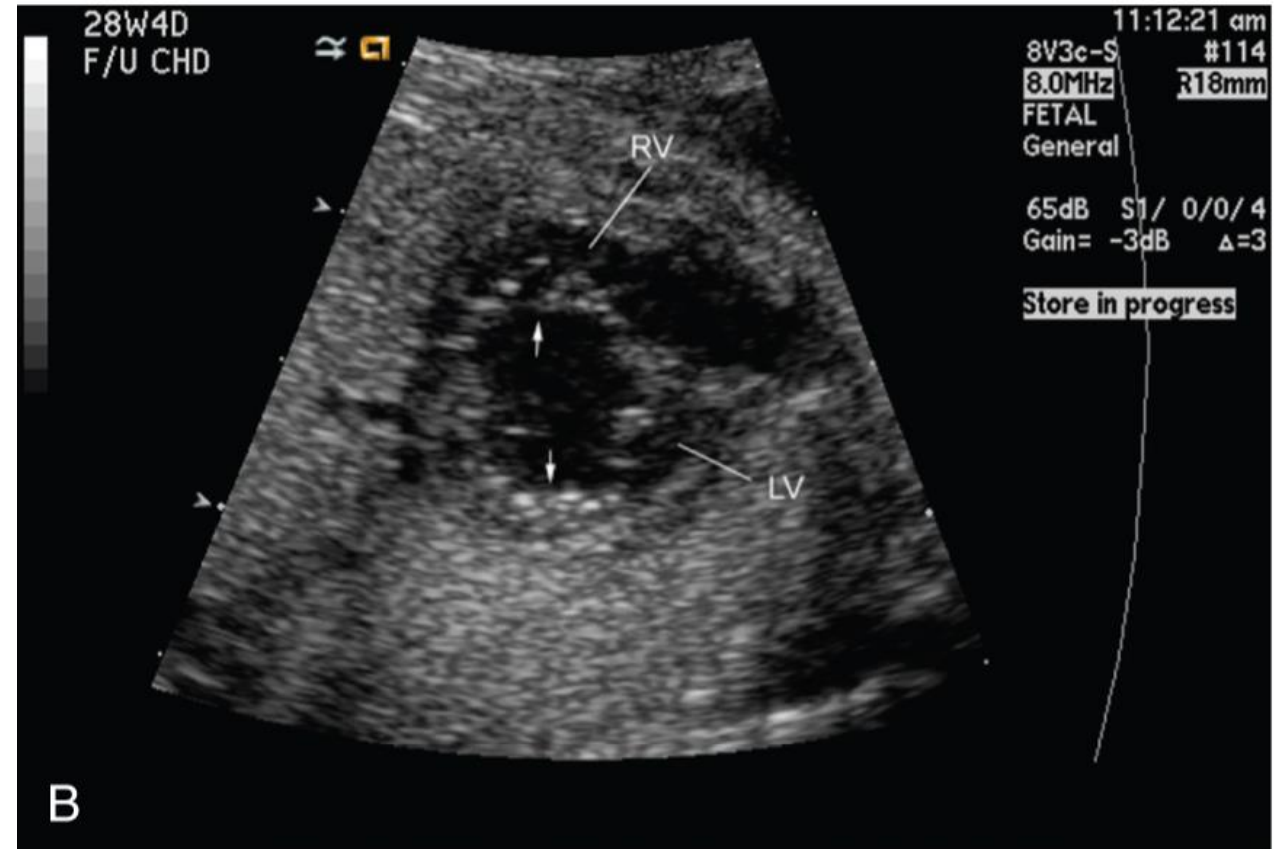
- Four-chamber view identifies diagnosis



Rychik, Jack. Zhiyun, Tian. *Fetal Cardiovascular Imaging: A Disease-Based Approach*. Elsevier Saunders, 2012.

# AVSD Fetal Echo Features

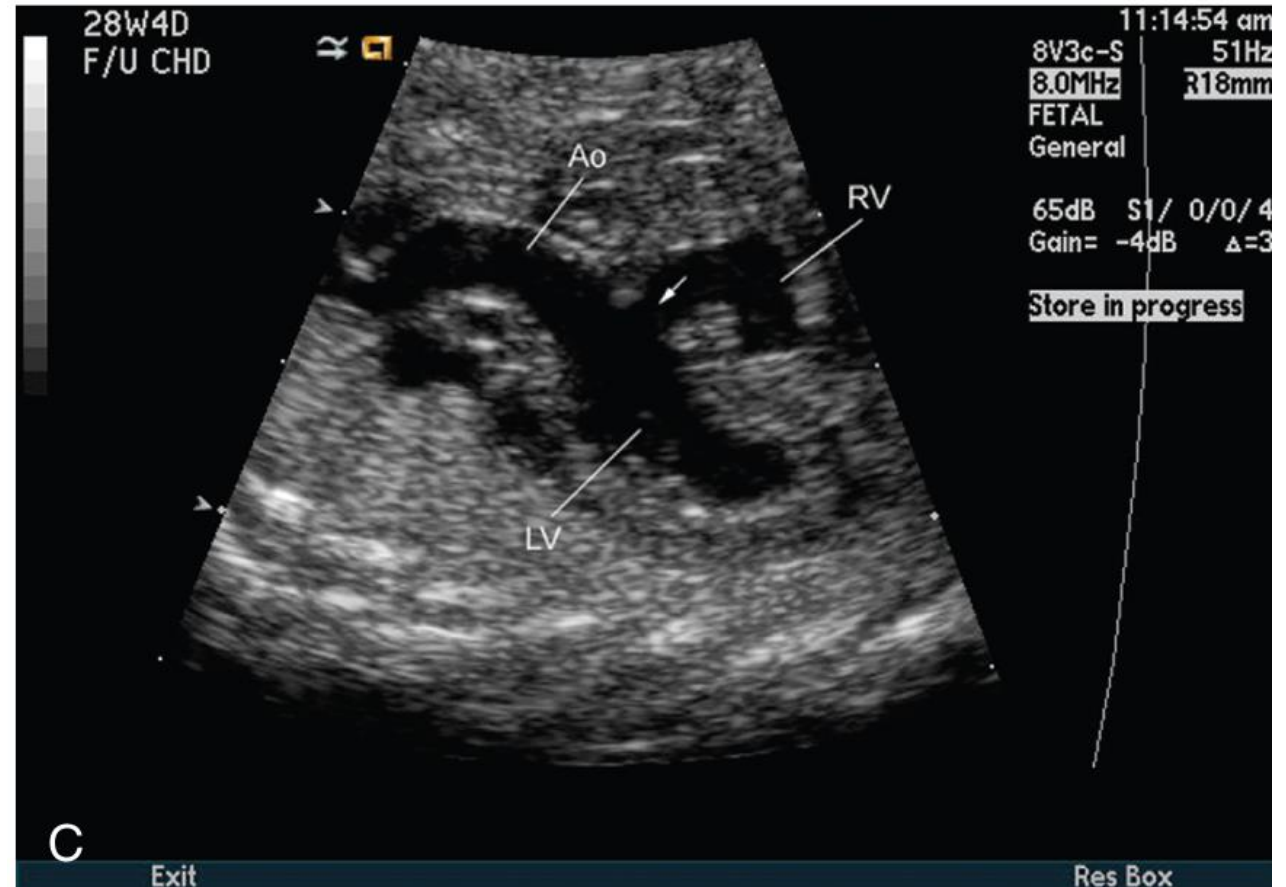
- Short-axis view:  
common AV valve en  
face with superior  
and inferior bridging  
leaflets crossing into  
both ventricles



Rychik, Jack. Zhiyun, Tian. *Fetal Cardiovascular Imaging: A Disease-Based Approach*. Elsevier Saunders, 2012.

# AVSD Fetal Echo Features

- Long-axis imaging of LV to aorta demonstrates elongated, scooped out or gooseneck LV outflow tract



Rychik, Jack. Zhiyun, Tian. *Fetal Cardiovascular Imaging: A Disease-Based Approach*. Elsevier Saunders, 2012.

# Gooseneck Deformity in AVSD



**Figure 29.14** Gooseneck left ventricular outflow tract (LVOT) deformity in AVSD. Because of the anterior displacement of the LVOT in AVSD, the elongated LVOT has been described as a “gooseneck” with echocardiographic (**left**) and angiographic (**right**) imaging. **Center:** Pediatric and adult goosenecks in Minnesota.

# AVSD Fetal Echo Features

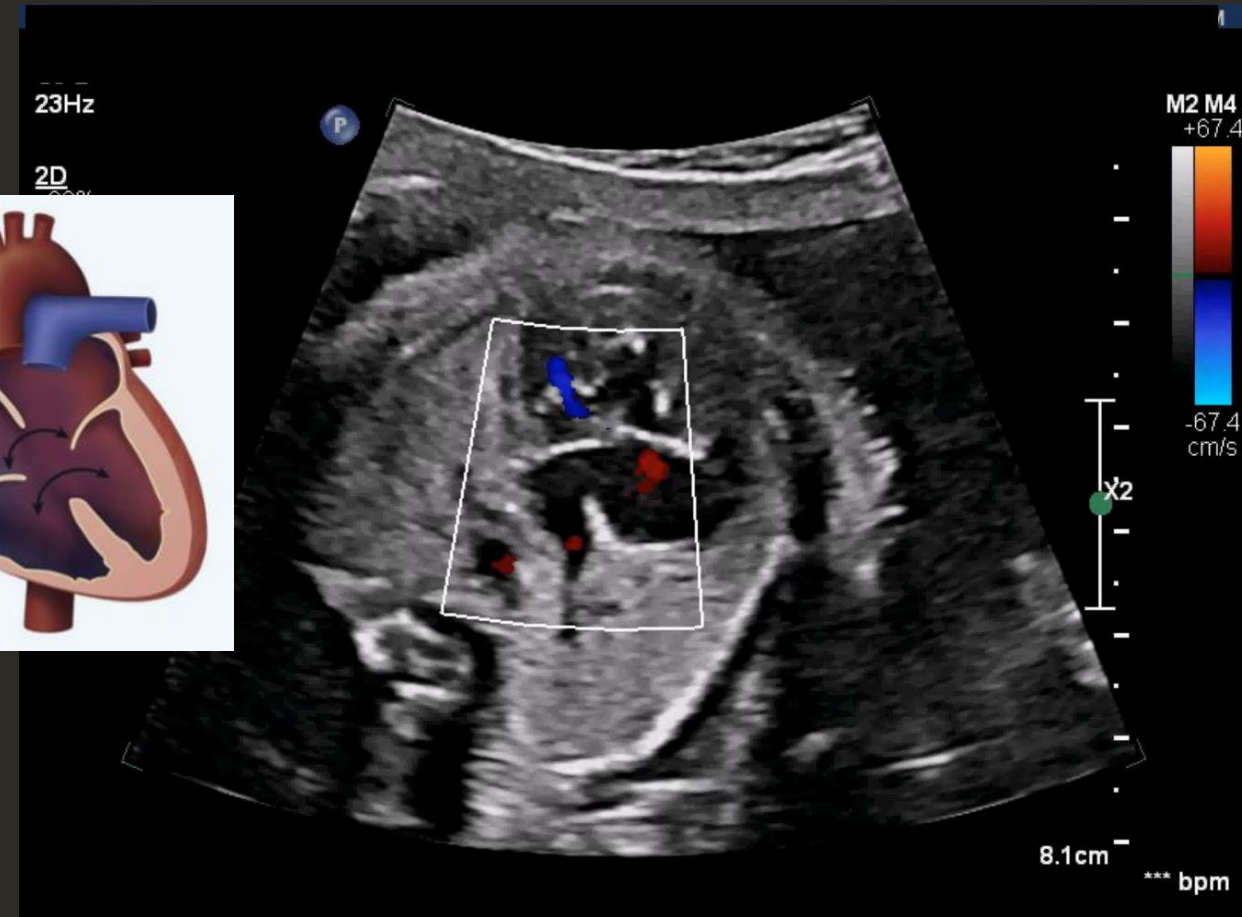
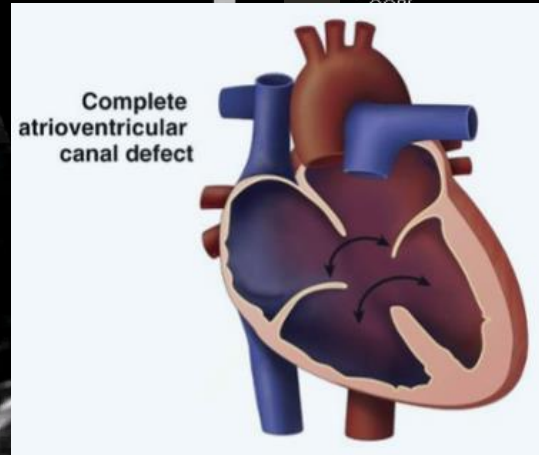
- Color Doppler identifies fetal AV valve regurgitation
  - If more than mild in utero → structural abnormality of the valve
  - May worsen after birth due to change in loading conditions
- Fetal rhythm evaluation: complete heart block sometimes seen (poor prognosis)



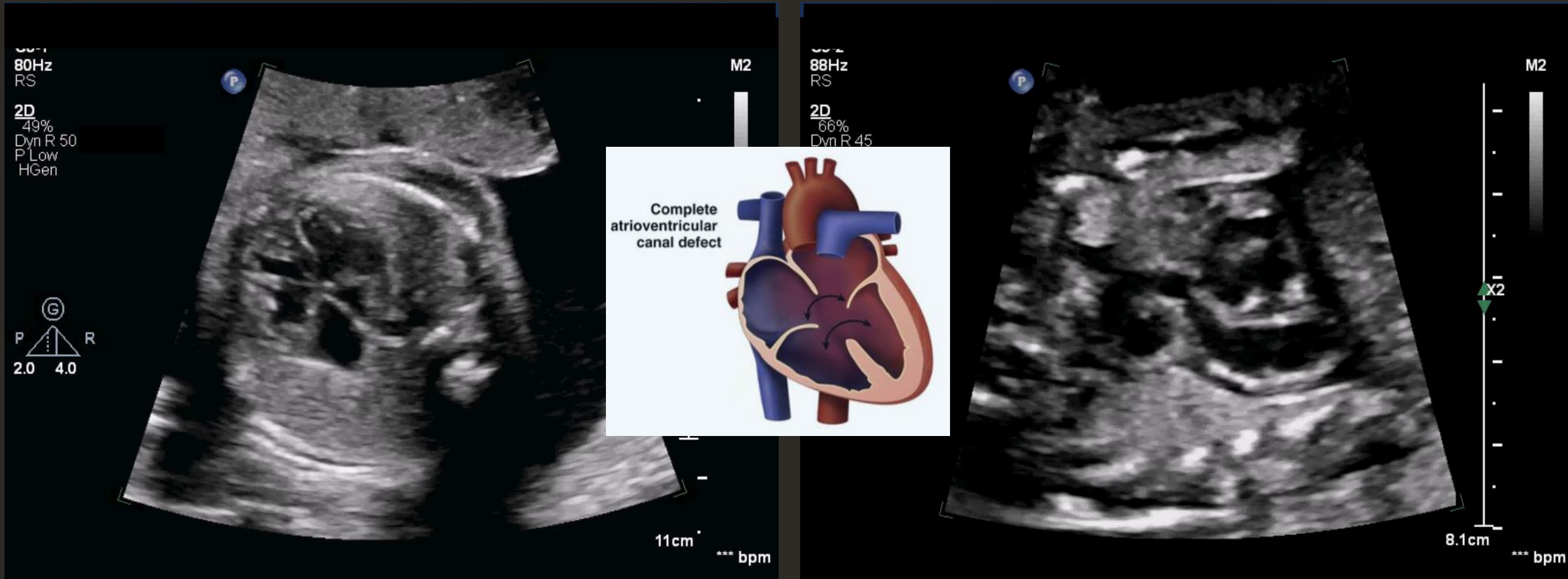
# Degree of “Balance” of the Common AV Valve

- Normally sits approximately 60% over RV
- If >60% over RV → RV dominant unbalanced AVSD
  - If RV dominant: evaluate left sided structure sizes
- Equal sitting of the common AV valve over both ventricles or >50% over LV → LV dominant unbalanced AVSD
  - If LV dominant: evaluate for RV hypoplasia, pulmonary stenosis, branch pulmonary artery narrowing

# Complete, balanced AVSD



# Complete, balanced AVSD

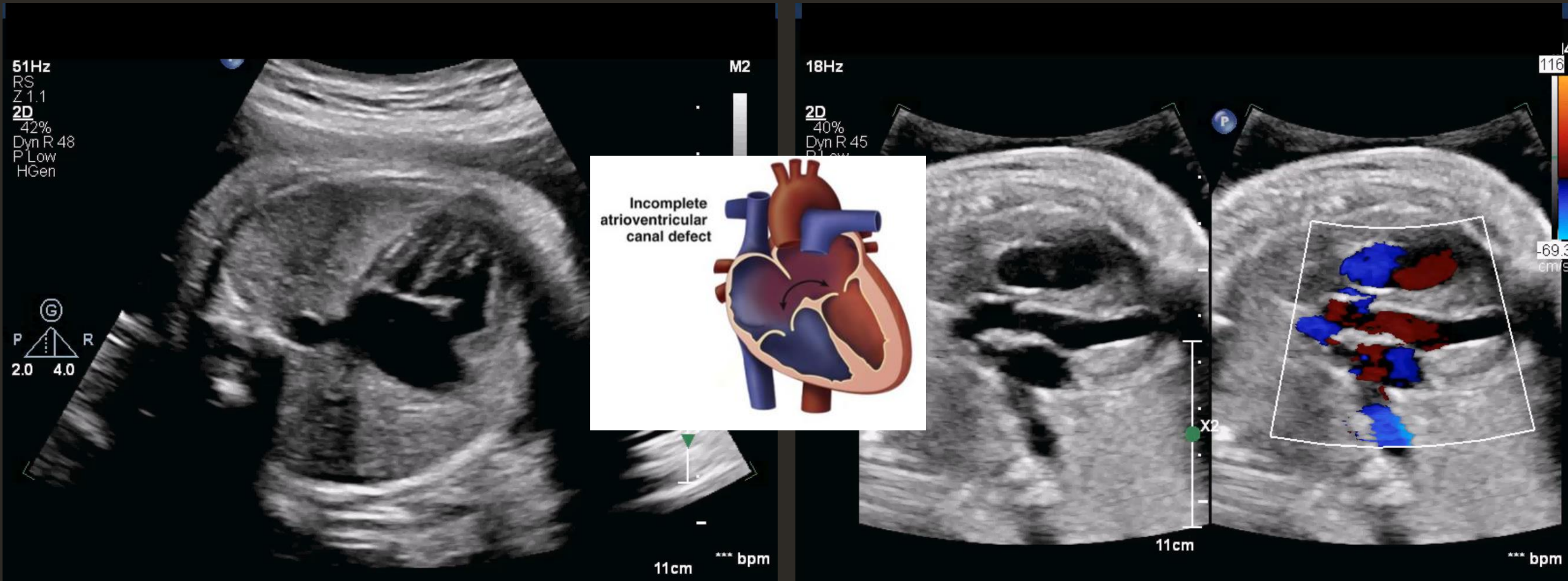




# Complete, balanced AVSD: AV valve en face



# Partial/Incomplete AVSD

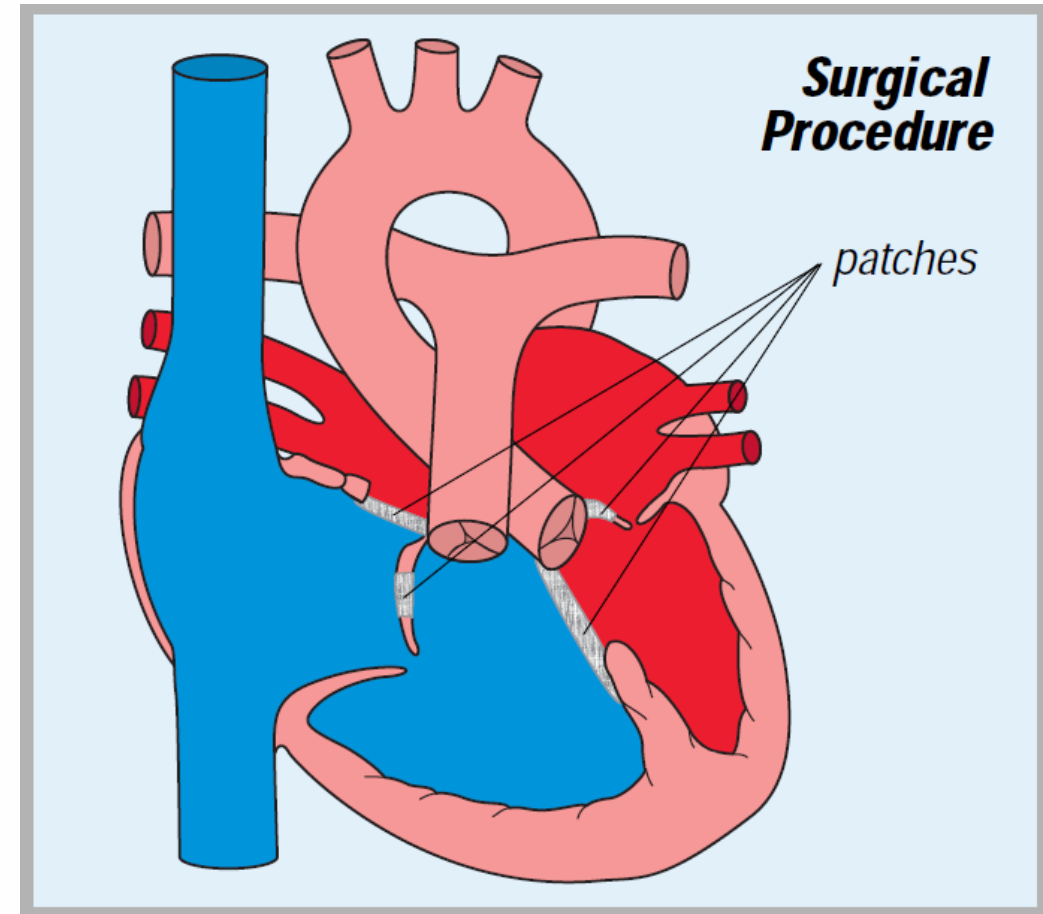


# Unbalanced AVSD



# AVSD Surgical Repair and Outcomes

- Complete, balanced AVSD
  - Surgical repair around 4-6 months of age
  - Long-term survival excellent
  - Residual lesions: valve regurgitation, valve stenosis, subaortic stenosis
- Unbalanced AVSD
  - Single ventricle palliation





A photograph of a male doctor in a white lab coat, viewed from the side, holding a heart specimen in his hands. He is in a laboratory or office setting with various medical equipment and framed pictures on the wall. The entire image is overlaid with a semi-transparent blue filter. The text "Thank you!" is centered in the middle of the image.

Thank you!

LOVE WILL.

# References

1. Allen, Hugh D., et al. *Moss and Adams' Heart Disease in Infants, Children, and Adolescents: Including the Fetus and Young Adult*. Wolters Kluwer Health, Lippincott Williams & Wilkins, 2013.
2. Park, Myung K., *Park's Pediatric Cardiology for Practitioners*. Mosby, 2014
3. Rychik, Jack. Zhiyun, Tian. *Fetal Cardiovascular Imaging: A Disease-Based Approach*. Elsevier Saunders, 2012.



# Ward Family Heart Center

---

CHILDREN'S MERCY KANSAS CITY